



13 Pleasant View, Merthyr Tydfil, CF48 4LF

£118,000

**** 360 WALK THROUGH TOUR AVAILABLE ****

**** Bay Fronted Mid Terraced House ** Elevated Location with Views Over the Area ** Off Road Parking ****

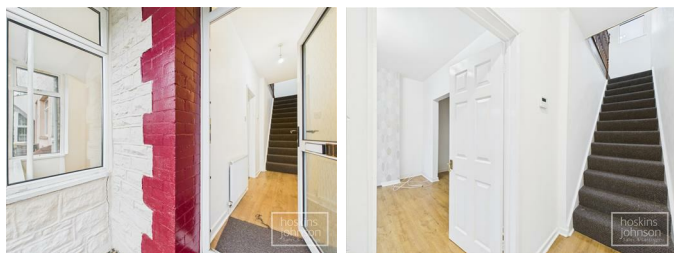
Offered with no onward chain and giving an excellent opportunity to climb onto the housing ladder.

A bay fronted mid terraced house comprising entrance hall, lounge, open plan dining room, cream gloss kitchen with oven & hob, modern bathroom and three bedrooms.

There is an elevated front garden, giving views over the surrounding area, together with garden/parking area to the rear.

The property is offered with no onward chain and offering excellent potential for first time buyers/investors.

Entrance Hall



Lounge 13'3" x 11'1" (4.06 x 3.38)



Double glazed bay window to front, radiator, laminated wood flooring, open plan to dining room.

Dining Room 11'10" x 11'9" (3.62 x 3.60)



Radiator, laminated wood flooring.

Kitchen 13'0" x 8'2" (3.97 x 2.50)



Fitted with cream gloss base and wall cupboards with tiled splash backs, stainless steel sink unit, ceramic hob and electric oven with extractor hood above, space for washing machine and fridge/freezer, radiator, tiled floor, wall mounted gas combination boiler, double glazed window and door to rear.

Lobby

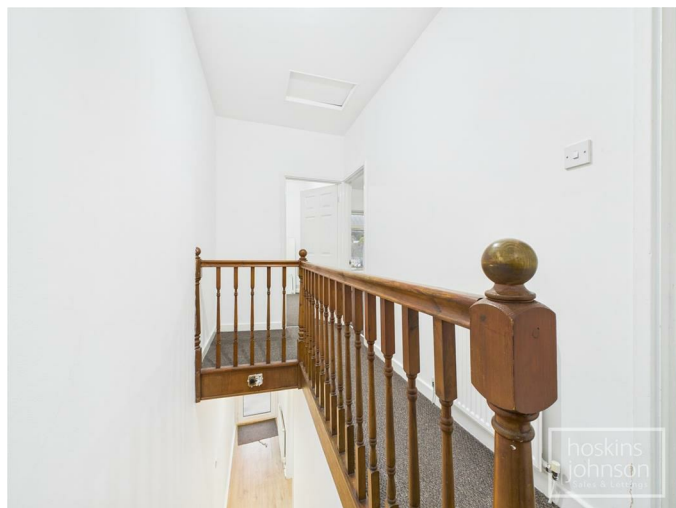
Tiled floor, understairs storage recess.

Bathroom



White three piece suite comprising panelled bath with shower mixer taps, wc, wash hand basin, part tiled walls, tiled floor, radiator, double glazed window to rear.

First Floor Landing



Double glazed window to rear, attic access.

Bedroom 1 12'4" x 9'10" (3.78 x 3.00)



Double glazed window to front, radiator.

Bedroom 2 9'11" x 9'6" (3.04 x 2.92)



Double glazed window to rear, radiator.

Bedroom 3 9'1" x 5'4" (2.79 x 1.65)



Double glazed window to front, radiator.

Outside



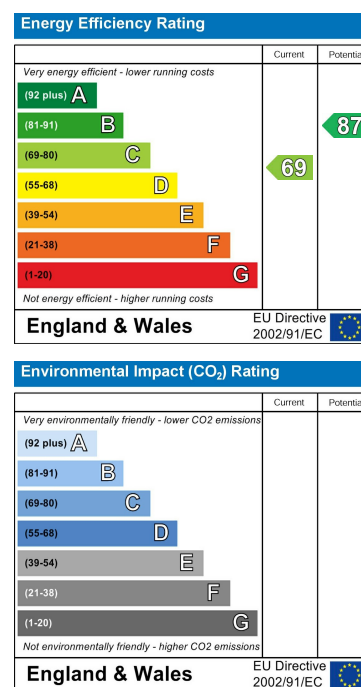
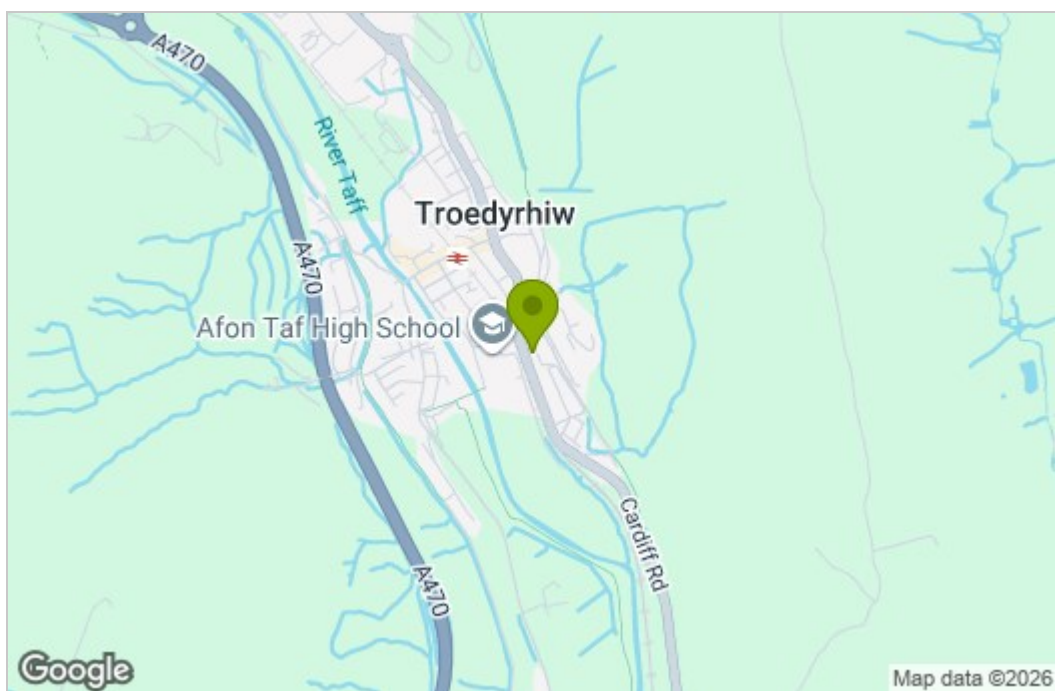
Terraced front garden with views over the surrounding area.

Level rear garden with parking.

Floor Plan



Area Map



These particulars, whilst believed to be accurate are set out as a general outline only for guidance and do not constitute any part of an offer or contract. Intending purchasers should not rely on them as statements of representation of fact, but must satisfy themselves by inspection or otherwise as to their accuracy. No person in this firm's employment has the authority to make or give any representation or warranty in respect of the property.

22 Market Street, Pontypridd, CF37 2ST
Tel: 01443 404093 Email: pontypridd@hoskinsjohnson.co.uk www.hoskinsjohnson.co.uk